



HOT

HighOptimizedTechnology



For daily electrical, mechanical, industrial
and photovoltaic applications

	THT8	THT80	THT120	THT200	THT300	
IR resolution	120x90 pxl	120x90 pxl	120x120 pxl	160x120 pxl	384x288 pxl	
Temperature range	-20° ÷ 400°C	-20° ÷ 550°C	-20° ÷ 650°C	-20° ÷ 650°C	-20° ÷ 650°C	
Image frequency	25Hz	50Hz	50Hz	50Hz	50Hz	
Thermal sensitivity/NETD	<0.05°C @ 30°C / 50mK	<0.06°C @ 30°C / 50mK	<0.05°C @ 30°C / 50mK	<0.05°C @ 30°C / 50mK	<0.05°C @ 30°C / 50mK	
Built-in visual camera	-	2 MP, focus free, built in LED light	2 MP, focus free	2 MP, focus free	2 MP, focus free	
Picture in Picture	-	●	●	●	●	
AutoFusion image enhancement	-	●	●	●	●	
Accuracy	±3°C (±5.4°F) or ±3% of the reading	±2°C (±3.6°F) or ±2% of the reading	±2°C (±3.6°F) or ±2% of the reading	±2°C (±3.6°F) or ±2% of the reading	±2°C (±3.6°F) or ±2% of the reading	
Field of view (FOV) / Focal length / Lens	50° x 38° / f 1.13 2.3mm	50° x 37° / f 1.13 2.3mm	15.6° x 15.6° / f 1.0 7.5mm	20.7° x 15.6° / f 1.0 7.5mm	41.5° x 31.1° / f 1.0 9mm	
I FOV	7.29mrad	7.3mrad	2.26mrad	2.26mrad	1.89mrad	
Focus mode	focus free	focus free	focus free	manual	manual	
Digital zoom	-	1–32x continuous	1–32x continuous	1–32x continuous	1–32x continuous	
Measurement tools (in live mode)	5 spots, center spot, hot/cold spots, 2 areas, 4 lines	3 spots, center spot, hot/cold spots, 3 areas, vertical and horizontal lines				
Area measurement information	max, min, AVG	max, min, center	max, min, AVG	max, min, AVG	max, min, AVG	
IR Video recording	●	●	●	●	●	
Measurement corrections	-			emissivity, reflected temperature,		
Color palettes	iron, rainbow, white hot, black hot, medical, artic, hot iron, fulgurite			iron, rainbow, white hot, black hot,		
Span modes	-	auto, manual, histogram	auto, manual, histogram	auto, manual, histogram	auto, manual, histogram	
Laser pointer	-	-	-	-	-	
Laser distance meter	-	-	-	-	-	
Built in LED light	smartphone torch	●				
Internal memory storage	smartphone storage	3,4 GB	3,4 GB	3,4 GB	3,4 GB	
On-camera report building	-	text annotation	text annotation	text annotation	text annotation	
Communication modes	USB type C	USB type C, Wi-fi, micro SD	USB type C, Wi-fi, micro SD	USB type C, Wi-fi, micro SD	USB type C, Wi-fi, micro SD	
Display	smartphone display	touch screen	touch screen	touch screen	touch screen	
Battery operation time	-	3 hours	4 hours	4 hours	4 hours	
Dimensions (L x W x H)	50 x 30 x 20mm	133 x 87 x 24mm	240 x 101 x 110mm	240 x 101 x 110mm	240 x 101 x 110mm	

Technical spec

	THT400	THT500	THT600	THT600L	THT500H	THT600H
	640x480 pxl	160x120 pxl	384x288 pxl	384x288 pxl	160x120 pxl	384x288 pxl
	-20° ÷ 550°C	-20° ÷ 650°C	-20° ÷ 650°C	-20° ÷ 650°C	-20° ÷ 1200°C	-20° ÷ 1200°C
	25Hz	50Hz	50Hz	50Hz	50Hz	50Hz
	<0.05°C @ 30°C / 50mK	<0.05°C @ 30°C / 50mK	<0.05°C @ 30°C / 50mK	<0.05°C @ 30°C / 50mK	<0.05°C @ 30°C / 50mK	<0.05°C @ 30°C / 50mK
	2 MP	5 MP, focus free	5 MP, focus free	5 MP, focus free	5 MP, focus free	5 MP, focus free
	●	●	●	●	●	●
	●	●	●	●	●	●
	±2°C (±3.6°F) or ±2% of the reading	±2°C (±3.6°F) or ±2% of the reading	±2°C (±3.6°F) or ±2% of the reading	±2°C (±3.6°F) or ±2% of the reading	±2°C (±3.6°F) or ±2% of the reading	±2°C (±3.6°F) or ±2% of the reading
	31.9° x 25.7° / f1.0 9mm	17.3° x 13° / f1.0 9mm	17° x 12.7° / f1.0 22mm	9.8° x 7.3° / f1.0 38mm	17.3° x 13° / f1.0 9mm	17° x 12.7° / f1.0 22mm
	1.89mrad	1.89mrad	0.77mrad	0.45mrad	1.89mrad	1.89mrad
	manual	manual	manual	manual	manual	manual
	1–32x continuous	1–32x continuous	1–32x continuous	1–32x continuous	1–32x continuous	1–32x continuous
	none, center spot, 3 spots, hot/cold spots, 3 areas, vertical and horizontal lines, screening mode					
	max, min, AVG	max, min, AVG	max, min, AVG	max, min, AVG	max, min, AVG	max, min, AVG
	●	●	●	●	●	●
	ambient temperature, atmospheric humidity, infrared compensation, distance compensation					
	brown hot, blue/red, hot/cold, feather, above max alarm, below min alarm, interval alarm					
	auto, manual, histogram	auto, manual, histogram	auto, manual, histogram	auto, manual, histogram	auto, manual, histogram	auto, manual, histogram
	-	●	●	●	●	●
	-	●	●	●	●	●
		●	●	●	●	●
	3,4 GB	3,4 GB	3,4 GB	3,4 GB	3,4 GB	3,4 GB
	text annotation	text annotation, voice annotation	text annotation, voice annotation	text annotation, voice annotation	text annotation, voice annotation	text annotation, voice annotation
	USB type C, Wi-fi, micro SD	micro USB, Wi-fi, micro SD, micro HDMI	micro USB, Wi-fi, micro SD, micro HDMI	micro USB, Wi-fi, micro SD, micro HDMI	micro USB, Wi-fi, micro SD, micro HDMI	micro USB, Wi-fi, micro SD, micro HDMI
	touch screen	touch screen	touch screen	touch screen	touch screen	touch screen
	4 hours	4 hours	4 hours	4 hours	4 hours	4 hours
	240 x 101 x 110mm	272 x 100 x 120mm	270 x 101 x 168mm	270 x 101 x 168mm	270 x 101 x 168mm	270 x 101 x 168mm

Specifications

High Resolution

High resolution means maximum performance and versatility. THT400 represents the top of the range among HT thermal imaging cameras in terms of resolution, making it perfect for inspections on mechanical systems, electrical installations, HVAC systems and for high-level building inspections.



ORDER CODE
HNTHT400



THT400

640x480
PIXEL

TEMPERATURE
RANGE
-20°÷550°C

FIELD
OF VIEW
31.9°x25.7°

- › PictureinPicture
- › AutoFusion image enhancement
- › Thermal sensitivity:
<0.05°C @ 30°C / 50mK
- › Compatible with HT Pro Camera



COMPATIBLE WITH
HT PRO CAMERA

HIGH
RESOLUTION
640x480
pxl

High Resolution

HVAC/R Electrical & Mechanical application

HVAC, electrical and mechanical system maintenance are of prime importance. HT new entry-level range of thermal imaging cameras composed of THT300, THT200 and THT120 allows you to detect the most common problems affecting these systems.



ORDER CODE
HN000300



THT300

384x288 TEMPERATURE RANGE FIELD OF VIEW
PIXEL **-20° ÷ 650°C** **41.5°x31.1°**

ORDER CODE
HN000200



THT200

160x120 TEMPERATURE RANGE FIELD OF VIEW
PIXEL **-20° ÷ 650°C** **20.7°x15.6°**

ORDER CODE
HN000120



THT120

120x120 TEMPERATURE RANGE FIELD OF VIEW
PIXEL **-20° ÷ 650°C** **15.6°x15.6°**

COMMON FEATURES

- › PictureinPicture
- › AutoFusion image enhancement
- › Temperature range: -20° ÷ 650°C
- › Thermal sensitivity: <0.05°C @ 30°C / 50mK



COMPATIBLE WITH
HT PRO CAMERA

Electrical & Mechanical

Industrial application/ Utility

When it comes to industrial and high voltage applications, damages caused by poor maintenance of corrosion over time can be severe and very costly. Inspection and troubleshooting has to be of high quality. HT advanced thermal imaging cameras are perfect for this application.



ORDER CODE
HN00600L



THT600L

384x288 TEMPERATURE RANGE FIELD OF VIEW
PIXEL **-20°÷650°C** **9.8°x7.3°**

ORDER CODE
HN00600



THT600

384x288 TEMPERATURE RANGE FIELD OF VIEW
PIXEL **-20°÷650°C** **17°x12.7°**

ORDER CODE
HN000500



THT500

160x120 TEMPERATURE RANGE FIELD OF VIEW
PIXEL **-20°÷650°C** **17.3°x13°**

COMMON FEATURES

- › PictureinPicture
- › AutoFusion image enhancement
- › Thermal sensitivity: <0.05°C @ 30°C / 50mK
- › Laser distance meter
- › Built in LED light
- › Hand strap



COMPATIBLE WITH
HT PRO CAMERA

Industrial application

High Temperature

The higher the temperatures, the higher the risks. Thanks to HT advanced thermal imaging cameras specialized in high temperature measurement, you will operate safely in any environment.



ORDER CODE
HN00600H



THT600H

384x288 TEMPERATURE RANGE FIELD OF VIEW
PIXEL **-20°÷1200°C** **17°x12.7°**

ORDER CODE
HN00500H



THT500H

160x120 TEMPERATURE RANGE FIELD OF VIEW
PIXEL **-20°÷1200°C** **17.3°x13°**

COMMON FEATURES

- › Picture in Picture
- › AutoFusion image enhancement
- › Thermal sensitivity: <math><0.05^{\circ}\text{C}</math> @ 30°C / 50mK
- › Laser distance meter
- › Built in LED light
- › Hand strap

HIGH
TEMPERATURE
1200°C



COMPATIBLE WITH
HT PRO CAMERA

High Temperature

Compact & pocket sized

Small and excellent, HT infrared technology is now pocket-sized. With your compact IR camera you can easily and quickly carry out your inspections at any time.



ORDER CODE
HN008000



THT80

120x90
PIXEL

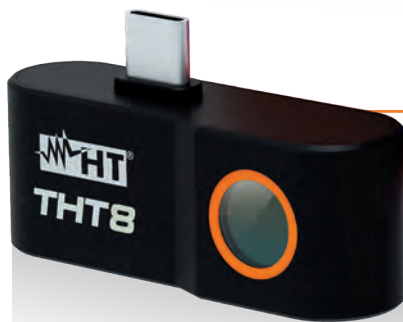
TEMPERATURE
RANGE
-20°÷550°C

FIELD
OF VIEW
50°x37°

- › AutoFusion
- › Touchscreen



COMPATIBLE WITH
HT PRO CAMERA



ORDER CODE
HN000080



THT8

120x90
PIXEL

TEMPERATURE
RANGE
-20°÷400°C

FIELD
OF VIEW
50°x38°

- › Android compatibility
- › USB type C



COMPATIBLE WITH
HT SMART CAMERA



HT ITALIA S.R.L.

Via della Boaria, 40 48018 Faenza (RA) Italy

T +39 0546 621002 | **F** +39 0546 621144

M export@ht-instruments.com | **ht-instruments.com**



Diensten van EURO-INDEX

EURO-INDEX is fabrikant, importeur en distributeur van diverse A-merken op het gebied van test- en meetinstrumenten. Daarnaast leveren wij een groot aantal diensten om het gebruik van deze instrumenten in uw bedrijfsvoering te optimaliseren. Dit omvat uiteraard onderhoud, reparatie en kalibratie van de instrumenten, maar ook kennisdeling via de EURO-INDEX Academy en verhuur van instrumenten.

Geautoriseerd Service Centrum

EURO-INDEX b.v. is van alle vertegenwoordigde merken een Geautoriseerd Service Centrum. Dit betekent dat uw instrumenten worden behandeld door technici die zijn opgeleid door de fabrikant en beschikken over de juiste gereedschappen en software. Er worden uitsluitend originele onderdelen toegepast en de garantie van uw instrument, evenals de certificering (ATEX, EN50379, etc.) blijven intact.

Kalibratielaboratorium

Ons moderne service- en kalibratielaboratorium beschikt over een RvA accreditatie naar NEN-EN-ISO/IEC 17025. Deze accreditatie geldt voor grootheden, zoals gespecificeerd in de scope bij accreditatienummer K105.



Kijk voor een overzicht van al onze diensten op euro-index.nl/diensten



Mobiele Service

Naast de vaste kalibratielaboratoria in Capelle aan den IJssel en Zaventem beschikken wij ook over laboratoria op wielen met de naam "Mobiele Service". Dit biedt vertrouwde service en kwaliteit, bij u voor de deur!

KWS®

KWS® is een uniek servicesysteem voor uw meetinstrumenten met periodiek onderhoud en kalibratie tegen vaste, lage kosten. Uw kalibratiecertificaten zijn digitaal beschikbaar via Mijn KWS (gratis webportaal en app).

Verhuur van meetinstrumenten

- Uitgebreid assortiment
- Nauwkeurigheid aantoonbaar door actueel kalibratiecertificaat
- Deskundig advies
- Complete levering inclusief accessoires

EURO-INDEX Academy

- Trainingen (individueel en klassikaal)
- Cursussen en workshops
- Demonstratie- en instructievideo's
- Whitepapers



Servicebalie



Onderhoud, reparatie en kalibratie



Cursussen en workshops



Mobiele Service

Wijzigingen voorbehouden EURO-INDEX® NL 24005



NEDERLAND
Rivium 2e straat 12
2909 LG Capelle a/d IJssel
T: 010 - 2 888 000
F: 010 - 2 888 010
verkoop@euro-index.nl
www.euro-index.nl



BELGIË
Leuvensesteenweg 607
1930 Zaventem
T: +32 - (0)2 - 757 92 44
F: +32 - (0)2 - 757 92 64
info@euro-index.be
www.euro-index.be